



## WATER BATH

# WATER BATH BER1BZ1 TO BER1BZ7

## THERMOSTATIC WATER BATHS



1. Inner tank: 1 hole, 2 holes, 2 rows & 4 four holes, 2 rows & 6 holes are stainless steel stretching inner chamber.
2. 1 row & 4 holes, 1 row & 6 holes, 2 rows & 8 holes are stainless steel inner chamber.

## SPECIFICATIONS

Model	BER1BZ1	BER1BZ2	BER1BZ3	BER1BZ4
Old Model	BBWA-201	BBWA-202	BBWA-203	BBWA-204
Function				
Heating Mode	Bottom heating, water temperature natural convection			
Temp. Range	Rt+5~100°C			
Temp. Resolution Ratio	0.1°C			
Temp. Motion	±0.5°C			
Temp. Uniformity	±1°C			
Structure				
Water Sink	Stainless steel, surface electrolysis treatment			
Outer Shell	Cold rolled steel plate, surface electrostatic powder spray			
Heater	Stainless steel U type heating tube			
Power Rating	300W	600W	1000W	1500W
Controller				
Temp. Control Mode	PID			
Temp. Setting Mode	Touch button setting			
Temp. Display Mode	Measuring temperature: display on the three digital tubes upper row, setting temperature: display on the lower row			
Timer	0~999 min (with timing function)			
Timing Function	Fixed temperature operation, timing function, auto stop			
Program Schema	Optional: multi-section program control			
Additional Function	Deviation correction, menu key lock, power failure back-up, power-off parameter memory, PID adjustable			
Sensor	Thermal resistor			
Safety Device	Over-temperature alarm, short-circuit protection			
Specification				
Inner Chamber Size (W*L*H)(mm)	160*160*130	305*160*130	600*165*130	900*165*130
Exterior Size (W*L*H)(mm)	200*210*210	340*210*210	635*165*210	930*210*210
Packing Size (W*L*H)(mm)	270*270*275	405*275*275	715*260*275	1000*260*275
Internal Volume	3.3L	6.3L	12.8L	19.3L
Cover Aperture	Φ120mm			
Cover Material	PP Plastic			
Cover Number Per Hole	5			

Power Supply (50/60Hz) Current Rating	AC220V 1.4A	AC220V 2.7A	AC220V 4.5A	AC220V 6.8A
NW/GW (kg)	3KG/3.5KG	4KG/5KG	7KG/8KG	8KG/10KG
Alt Name	Thermostatic Water Baths			
Model	BER1BZ5	BER1BZ6	BER1BZ7	
Old Model	BBWA-205	BBWA-206	BBWA-207	
Function				
Heating Mode	Bottom heating, water temperature natural convection			
Temp. Range	Rt+5~100°C			
Temp. Resolution Ratio	0.1°C			
Temp. Motion	±0.5°C			
Temp. Uniformity	±1°C			
Structure				
Water Sink	Stainless steel, surface electrolysis treatment			
Outer Shell	Cold rolled steel plate, surface electrostatic powder spray			
Heater	Stainless steel U type heating tube			
Power Rating	800W	1200W	2000W	
Controller				
Temp. Control Mode	PID			
Temp. Setting Mode	Touch button setting			
Temp. Display Mode	Measuring temperature: display on the three digital tubes upper row, setting temperature: display on the lower row			
Timer	0~999 min (with timing function)			
Timing Function	Fixed temperature operation, timing function, auto stop			
Program Schema	Optional: multi-section program control			
Additional Function	Deviation correction, menu key lock, power failure back-up, power-off parameter memory, PID adjustable			
Sensor	Thermal resistor			
Safety Device	Over-temperature alarm, short-circuit protection			
Specification				
Inner Chamber Size (W*L*H)(mm)	305*305*130	470*305*130	600*300*130	
Exterior Size (W*L*H)(mm)	340*350*210	510*350*210	635*340*210	
Packing Size (W*L*H)(mm)	415*415*275	575*410*275	700*415*275	
Internal Volume	12L	18.6L	23.4L	
Cover Aperture	Φ120mm			
Cover Material	PP Plastic			
Cover Number Per Hole	5			
Power Supply (50/60Hz) Current Rating	AC220V 3.6A	AC220V 5.4A	AC220V 6.8A	
NW/GW (kg)	6KG/7KG	8KG/9KG	9KG/11KG	
Alt Name	Thermostatic Water Baths			



## APPLICATIONS

Used for precision constant temperature and auxiliary.

## WATER BATH BER1DL1 TO BER1DL7

THERMOSTATIC WATER BATH



Cold-rolling steel spraying exterior.  
Stainless steel Inner tank and cover.  
Intelligent Temperature control instrument adopts PID control, dual digital display, with functions of timing of operation (0-9999 min), fixed value operation, automatically stop, realization of over-temperature alarm, power-off compensation, power failure memory, error correction and Menu lock.

## SPECIFICATIONS

Model	BER1DL1	BER1DL2	BER1DL3	BER1DL4
Voltage	200-240V/100-120V			
Power(W)	400	500	1000	1500
Temmotion (°C)	±0.5			
Tem-range (°C)	Room Temp.±5~100°C			
Tem. Sensitivity (°C)	≤±1			
Display error (°C)	≤±2.5			
Chamber Size (mm)	168*168*120	325*168*120	653*168*120	945*168*120
Products Size (mm)	360*240*190	510*240*190	830*380*190	1100*250*215
Packing Size (mm)	400*320*235	555*320*230	865*320*235	1170*320*230
N.W.(KG)	3.3	5	7	12
G.W.(KG)	4.3	6.5	8	14
Alt Name	Thermostatic water bath			

Model	BER1DL5	BER1DL6	BER1DL7
Voltage	200-240V/100-120V		
Power(W)	1000	1500	2000
Temmotion (°C)	±0.5		
Tem-range (°C)	Room Temp.±5~100°C		
Tem. Sensitivity (°C)	≤±1		
Display error (°C)	≤±2.5		
Chamber Size (mm)	325*325*120	480*325*120	635*325*120
Products Size (mm)	510*380*190	670*380*190	830*380*190
Packing Size (mm)	550*475*235	715*475*235	870*480*235
N.W.(KG)	6.5	8.6	9
G.W.(KG)	7.7	9.3	10
Alt Name	Thermostatic water bath		



BER1DL1 BER1DL2



BER1DL3 BER1DL5



BER1DL4 BER1DL6



BER1DL7

## WATER BATH BER1CA1 TO BER1CA4

THERMOSTATIC WATER BATHS (STRETCHING INNER CHAMBER)



1. Stainless steel stretching inner container and roof cover.
2. Intelligent temperature controller with PID program, digital tube display and function of timing and over-temperature protection.
3. the electric drain switch, one-button operation, convenient to drain,  
Note: single hole water baths have no drain function.
4. Power off when water shortage to ensure the safe operation of the product.

## SPECIFICATIONS

Model	BER1CA1	BER1CA2	BER1CA3	BER1CA4
Classification	1 hole	1 row & 2 holes	2 rows & 4 holes	2 rows & 6 holes
Heating Mode	Nature water convection heat transfer			
Function				
--Temp. Range	RT+5~100°C			
--Temp. Resolution Ratio	0.1°C			
--Temp. Motion	±0.5°C			
--Temp. Uniformity	±1.0°C			
Structure				
--Inner Chamber	Stainless steel			
--Outer Shell	Cold-rolled steel plate, resistance to chemical reagents coating on the surface			
--Heater	Stainless steel heating tube			
--Power Rating	0.4kW	0.5kW	1.0kW	1.5kW
Controller				
--Temp. Control Mode	PID			
--Temp. Setting Mode	Touch button setting			
--Temp. Display Mode	Measuring temperature displays on the three digital tubes upper row, set temperature displays on the lower row			
--Timer	0~9999 min (with timing wait function)			
--Operation Function	Fixed temperature operation, timing function, auto stop			
--Program Mode	Optional			
--Additional Function	Deviation Correction, menu key locked, power failure back-up, power-off memory			
--Sensor	NTC			
Safety Device	Over temperature alarm			
Specification				

--Inner Chamber Size (W*L*H)(mm)	150*135*150	300*135*150	325*300*150	500*300*150
--Exterior Size (W*L*H)(mm)	170*154*210	318*168*210	350*318*210	524*322*210
--Packing Size (W*L*H)(mm)	240*230*280	390*240*280	420*390*280	600*390*280
--Volume	3.4L	6.1L	14.6L	22.5L
--Load Per Rack	5kg			
--Shelf Number	1			
--Power Supply (50/60Hz) Current Rating	AC220V/1.8A	AC220V/2.3A	AC220V/4.5A	AC220V/6.8A
--NW/GW (kg)	3.3/4	4.5/5	6/7	7.5/9
Alt Name	Thermostatic Water Baths			



## APPLICATIONS

Used for precision constant temperature and auxiliary.

## WATER BATH BER1CB1 TO BER1CB5

TRANSPARENT WATER BATH



1. Using innovative design structure, effectively prevent steam leakage.
2. Intelligent temperature control instrument with high brightness digital display, light-touch type key has the advantages of simple operation and high precision temperature control.
3. Shell, interior and cover of the product are all made of transparent engineering plastics, can clearly see the object to be heated.
4. Off when water shortage to ensure the safe operation of the product.

## SPECIFICATIONS

Model	BER1CB1	BER1CB2	BER1CB3	BER1CB4	BER1CB5
Capacity	2.6L	6L	9L	12L	20L
Voltage (V)	200-240V/100-120V				
Power (kW)	0.4	0.5	0.8	1	1.5
Temp. Motion (°C)	± 0.5				
Temp. Range (°C)	Rt+5~100				
Temp. Sensitivity (°C)	≤± 1				
Shelves Height (mm)Distance from bottom	100mm			150mm	100mm
Shelves Holes Diameter	Φ18.7mm*16	Φ18.7mm*32	Φ18.7mm*48		Φ18.7mm*96
Inner Chamber Size (L*W*H)	143*130*150	290*145*150	280*220*150	285*225*200	485*285*150
Exterior Size (L*W*H)	254*190*193	401*190*193	400*260*190	401*276*242	610*338*200

Packing Size (L*W*H)	295*270*275	457*270*275	450*350*270	450*350*300	640*410*230
N.W.(KG)	2.1	3.1	3.5	3.9	6
G.W. (KG)	2.7	3.8	5	4.8	8.5
Alt Name	Transparent Water Bath				



## APPLICATIONS

Used for precision constant temperature and auxiliary.

## WATER BATH BER1CC1 TO BER1CC4

THERMOSTATIC WATER BATHS



1. SHHW21.420All model cover for the two holes water bath, can be used as a digital two holes water bath.
2. SHHW21.600All model cover for the six holes water bath, can be used as a digital six holes water bath.

## SPECIFICATIONS

Model	BER1CC1	BER1CC2	BER1CC3	BER1CC4
Function				
--Temp Range	RT+5~65°C	RT+5~100°C	RT+5~65°C	RT+5~100°C
--Temp Resolution Ratio	0.1°C			
--Temp Motion	±0.5°C			
--Temp Uniformity	±1.0°C			
Structure				
--Inner Chamber	High quality hairline stainless steel plate			
--Outer Shell	Cold rolling steel electrostatic spraying exterior			
--Cover	High quality hairline stainless steel plate			
--Cover Circle	Without	With	Without	With
--Test Tube Rack	Without			
Controller				
--Heater	Stainless steel heating tube			
--Power Rating	0.5kW	1kW	0.75kW	2kW
--Temp Control Mode	PID			
--Temp Setting Mode	Touch button setting			
--Temp Display Mode	Measuring temperature: display on the three digital tubes upper row; setting temperature: display on the lower row			
--Timer	0~999min			
--Operation Function	Fixed temperature operation, timing function, auto stop.			
--Program Function	No			

--Additional Function	Deviation correction, Menu key lock, Power-off compensation, Power failure memory			
--Sensor	NTC			
Safety Device	Over temperature alarm			
Specification				
--Sink Size (W*L*H)(mm)	420*180*140		600*300*200	
--Exterior Size (W*L*H)(mm)	570*230*270		750*350*360	
--Packing Size (W*L*H)(mm)	720*320*380		900*440*440	
--Volume	11L		36L	
--Supply (50/60Hz) Current Rating	AC220V/2.3A	AC220V/4.5A	AC220V/6.8A	AC220V/9.1A
--NW/GW (kg)	8/9.5	8.5/10	17/19	18/20
Optional Accessories	Different sizes can be customized, can add power off protection function when water shortage.			
Alt Name	Thermostatic Water Baths			



## APPLICATIONS

Used for precision constant temperature and'ilia.

## WATER BATH BER1CD1 TO BER1CD4

THERMOSTATIC WATER TANK (STRETCHING INNER CHAMBER)



1. The inner liner and water bath cover are processed using high-quality stainless steel stretching technology, and the surface is treated with anti-corrosion technology. The top cover is made of high-temperature resistant plastic material, which is lightweight and beautiful.
2. Add a water discharge switch, one click operation, convenient for water discharge.
3. The anti dry burning (water shortage and power outage) function ensures the safe operation of the product.

## SPECIFICATIONS

Model	BER1CD1	BER1CD2	BER1CD3	BER1CD4
Heating Mode	Nature water convection heat transfer			
Function				
--Temp. Range	RT+5~65°C	RT+5~100°C	RT+5~65°C	RT+5~100°C
--Temp. Resolution Ratio	0.1°C			
--Temp. Motion	±0.5°C			
--Temp. Uniformity	±1.0°C			
Structure				
--Inner Chamber	SUS304 stretching			



--Outer Shell	Cold rolling steel electrostatic spraying exterior			
--Heater	Stainless steel heating tube			
--Power Rating	0.3kW	0.6kW	1.0kW	1.5kW
Controller				
--Temp.Control Mode	PID			
--Temp. Setting Mode	Touch button setting			
--Temp. Display Mode	Measuring temperature displays on the three digital tubes upper row, set temperature displays on the lower row			
--Timer	0~9999min (with timing wait function)			
--Operation function	Fixed temperature operation, timing function, auto stop.			
--Program Mode	Optional			
--Additional Function	Deviation Correction, menu key locked, power failure back-up, power-off memory			
--Sensor	NTC			
Safety Device	Over temperature alarm			
Specification				
--Inner Chamber size(W*L*H)(mm)	295*235*150		500*296*200	
--Exterior Size(W*L*H)(mm)	360*297*345		565*358*395	
--Packing Size(W*L*H)(mm)	390*327*395		595*388*445	
--Volume	11L		30L	
--Load Per Rack	5kg			
--Shelf Number	1			
--Power Supply(50/60Hz) Current Rating	AC220V/1.3A	AC220V/2.7A	AC220V/4.5A	AC220V/6.8A
--Nw/GW(kg)	3.3/4	4.5/5	6/7	7.5/9
Alt Name	Thermostatic water tank			

## WATER BATH BGI1BO1 TO BGI1BO4

### WATER BATH

Microprocessor controller (with timing function)

Provided for precise and constant temperature and auxiliary heating in colleges industrial and mining enterprises and scientific research departments



- ABS outer shell
  - Microprocessor control with timing function
  - Digital display
  - Audible and visible alarm for over temperature
- Option:
- Intelligent programmable temperature controller

## SPECIFICATIONS

Model	BGI1BO1	BGI1BO2	BGI1BO3	BGI1BO4
Electrical Requirements	220V 50Hz			
Power Consumption	500W	1000W	1500W	2000W
Temperature Range	RT+5~99°C			

Temperature Stability	±0.5°C			
Tracking Alarm	±2°C			
Chamber Volume	5L	10.8L	24.8L	
Interior Dimension (WxDxH, mm)	280x130x150	305x240x150	505x330x150	
Exterior Dimension (WxDxH, mm)	347x201x155	376x347x165	496x347x165	
Timing Range	1~5999min			
Remark	Two holes	Double lines four holes	Double lines six holes	Double lines eight holes
Alt Name	Water Bath			

## WATER BATH BGI1BR1 TO BGI1BR8

CIRCULATING BATH, WATER BATH



- Microprocessor controller (with timing function)
- Microprocessor control with timing function.
- Digital display.
- Audible and visible alarm for over temperature.

## SPECIFICATIONS

Model	BGI1BR1	BGI1BR2	BGI1BR3	BGI1BR4
Old Model	BBWA-3201	BBWA-3202	BCHT-3301	BCHT-3302
Electrical Requirement	220V 50Hz			
Power Consumption	500W	1000W		
Temperature Range	RT+5~100°C		RT+5~70°C	
Temperature Stability	±0.5°C		±0.3°C	
Display Resolution	0.1°C			
Chamber Volume	15.8L	28.8L	22L	30L
Interior Dimension (WxDxH, mm)	330x300x160	600x300x160	500x300x150	600x300x190
Exterior Dimension (WxDxH, mm)	570x220x260	750x350x300	620x340x260	770x370x280
Timing Range	1~9999min			
Alt Name	Water Bath		Circulating Bath (with electromagnetic-pump)	

Model	BGI1BR5	BGI1BR6	BGI1BR7	BGI1BR8
Old Model	BBWA-3205	BBWA-3204	BBWA-3203	BBWA-3206
Electrical Requirement	220V 50Hz			
Power Consumption	600W	800W	1000W	750W
Temperature Range	RT+5~100°C			RT+5~99°C
Temperature Stability	±0.5°C			±0.3°C
Display Resolution	0.1°C			
Chamber Volume	15.8L	21.6L	28.8L	2.1Lx3
Interior Dimension (WxDxH, mm)	330x300x160	450x300x160	600x300x160	162x149x151

Exterior Dimension (WxDxH, mm)	460x280x190	460x280x190 / 610x340x260 / 760x340x280	760x340x280	505x245x350
Timing Range	1~9999min			
Alt Name	Water Bath (all stainless steel)			Water Bath (three holes)



BGI1BR1 BGI1BR2



BGI1BR3 BGI1BR5 BGI1BR6  
BGI1BR7



BGI1BR4 BGI1BR8

## ACCESSORIES FOR PURCHASE

No	Name
1	Intelligent programmable temperature controller
2	RS485 connector



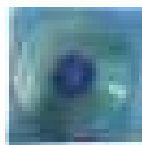
1



1



2



2

## APPLICATIONS

Provided for precise and constant temperature and auxiliary heating in colleges industrial and mining enterprises and scientific research departments.

## WATER BATH BGI1BQ1 TO BGI1BQ9

WATER BATH



Microprocessor controller (with timing function)

- A stamping molding stainless steel tank, easy to clean.
- LCD screen, multiple data display with timing function, easy to operate.
- Stainless steel shelves cover heater and sensor to avoid damage during using.
- Once-forming stainless steel lid.
- Cut off heater automatically in case of lack of water, meanwhile visible and audible alarms to remind users in time.
- Independent temperature-limiting alarm system.
- temperature error alarm.
- Test tube holder can be placed. (Option)

## SPECIFICATIONS

Model	BGI1BQ1	BGI1BQ2	BGI1BQ3	BGI1BQ4	BGI1BQ5
Old Model	BBWA-3101	BBWA-3102	BBWA-3103	BBWA-3104	BBWA-3105
Electrical Requirement	AC220 50Hz				
Power Consumption	400W	600W	1200W	1600W	
Temperature Range	RT+5~100°C				
Temperature Stability	±0.3°C				

Temp Alarm	±2°C				
Interior Dimension (WxDxH) mm	130x280x150	220x280x150	290x490x150	130x280x150	280x220x150
Exterior Dimension (WxDxH) mm	396x250x260	396x330x260	600x390x260	450x395x260	526x395x260
Timing Range	1~5999min				
Chamber Volume	2 holes Φ112mm	4 holes Φ92mm	6 holes Φ92mm	2 holes + 2 holes	2 holes + 4 holes
Alt Name	Water Bath				
Model	BGI1BQ6	BGI1BQ7	BGI1BQ8	BGI1BQ9	
Old Model	BBWA-3106	BBWA-3107	BBWA-3108	BBWA-3109	
Electrical Requirement	AC220 50Hz				
Power Consumption	800W			1000W	
Temperature Range	RT+5~100°C	RT+5~80°C	RT+5~100°C	RT+5~80°C	
Temperature Stability	±0.2°C				
Temp Alarm	0.1°C				
Interior Dimension (WxDxH) mm	300x240x200			500x300x200	
Exterior Dimension (WxDxH) mm	480x300x480			680x360x390	
Timing Range	1~5999min				
Chamber Volume	11L			20L	
Alt Name	Water Bath				



BGI1BQ1 BGI1BQ2 BGI1BQ4  
BGI1BQ5 BGI1BQ6 BGI1BQ7  
BGI1BQ8 BGI1BQ9



BGI1BQ3

## WATER BATH BFA1BV1 TO BFA1BV5

### THERMOSTATIC WATER BATH

Thermostatic water bath is a temperature controllable thermostatic water bath experimental instrument, mainly used in large and medium-sized universities, industrial and mining enterprises and scientific research units for biological, biochemical, cell, bacteria and other liquid, solid compound culture.



Unique and novel appearance, small size, powerful functions. All surface that contact with water adopt stainless steel material and PC material, with strong corrosion resistance.

Using a once punch-formed stainless steel inner liner, with unique sealing structure to eradicate water leakage; Three groups of water tanks postposition independent drain valves separately, can easily emptying the sewage after clean the Inner container.

Using microcomputer program PID automatic temperature control, uniform temperature control, high precision.

Built-in water level sensor, to prevent the hidden dangers of dry burning, safe and reliable.

Dual digital tube digital holographic display temperature and timing time, param

## SPECIFICATIONS

Model	BFA1BV1	BFA1BV2	BFA1BV3	BFA1BV4	BFA1BV5
Old Model	BBWA-301	BBWA-302	BBWA-303	BBWA-304	BBSW-4001
Timing range	1~99h59min (0 is forever)				

Temp. range	RT.+5°C~100°C				
Temp. accuracy	±0.5°C				
Temp. Uniformity@37°C	±0.5°C				
Number of holes	1		2		3
Volume	5Lx1	2Lx1	2Lx2	2Lx3	15Lx1
Workspace	276x118x98mmx1	140x126x95mmx1	140x126x95mmx2	140x126x95mmx3	500x300x95mmx1
Voltage	AC 220V 50Hz		AC 220V 50/60Hz		
Power	700W	300W	600W	900W	2200W
Dimensions	W.360xD.286xH.245mm	W.198xD.290xH.240mm	W.363xD.290xH.240mm	W.510xD.290xH.240mm	W.570xD.365xH.465mm
Net weight	5.1kgs	2.3kgs	5.1kgs	6.7kgs	13.6kgs
Alt Name	Thermostatic Water Bath				



BFA1BV1



BFA1BV2



BFA1BV3



BFA1BV4



BFA1BV5

## FEATURES

Unique and novel appearance, small size, powerful functions. All surface that contact with water adopt stainless steel material and PC material, with strong corrosion resistance.

Using a once punch-formed stainless steel inner liner, with unique sealing structure to eradicate water leakage; Three groups of water tanks postposition independent drain valves separately, can easily emptying the sewage after clean the Inner container.

Using microcomputer program PID automatic temperature control, uniform temperature control, high precision.

Built-in water level sensor, to prevent the hidden dangers of dry burning, safe and reliable.

Dual digital tube digital holographic display temperature and timing time, parameter display is accurate and intuitionistic, with beep alarm prompt function.

# WATER BATH BER1CF1

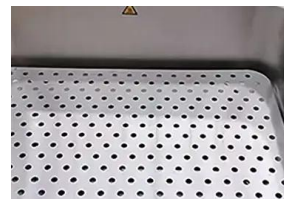
## BIG SIZE WATER BATHS



1. The enclosure of the product is formed and machined by using high-quality steel plate. Static electric spraying process is adopted on the surface, which is sturdy and durable. The inner container is finished by the stainless steel stretching.
2. The liner and upper cover are made of high-quality stainless steel plate, featuring strong corrosion resistance.
3. -shaped heating pipe is adopted for direct heating in water. The temperature rise is quick and the thermal loss is small.
4. Single-row digital display or intelligent temperature controller boasts simple operation and favorable application effect.

## SPECIFICATIONS

Model	BER1CF1
Supply voltage	220V/60HZ
Power(W)	2.4kw
Temp-motion	+0.5°C
Temp-range	RT+5 ~ 100°C
Senility of Temp Control	≤± 1
Display error	≤± 2.5
Chamber Size(mm)	620*500*200mm
Products Size(mm)	681*560*301mm
Packing Size(mm)	595*388*445mm
N.W.(Kg)	15KG
G.W.(Kg)	20KG
Alt Name	Big Size Water Bath



## WATER BATH BGI2J1 TO BGI2J4

### WATER BATH

Suitable for direct heating and auxiliary heating of biological, chemical, physical, plant, chemical and other experimental samples. Routine laboratory temperature control, Escherichia coli detection, sample thawing, bacterial detection, incubation microbial experiments, cell culture, food testing pretreatment, etc.



PID temperature controller, large LCD display screen and interface provides for user-friendly operation.

Easy to set Adjustable Timer. (1 minute to 5,999 minutes)

Built-in circulating water pump to ensure uniform upper and lower temperature of bath lotion.

Maintenance-free operation with easy to clean surface.

Both heater and bath chamber are made of corrosion-resistant stainless steel.

No angle in the bath chamber, easy to clean.

The standard stainless-steel bottom plate helps prevent direct contact by accessories and tubes to heating elements and sensors.

Drain valve makes emptying of bath water fast and easy for cleaning and moving.

Safety:

## SPECIFICATIONS

Model	BGI2J1	BGI2J2	BGI2J3	BGI2J4
Old Model	BBWA-2401	BBWA-2402	BBWA-2403	BBWA-2404
Power requirements	AC220V 50HZ			
Power (W)	500W	800W	1000W	
Temperature range	RT+5 - 100°C			RT+5 - 80°C
Temperature fluctuation	±0.2°C			
Temperature resolution	0.1°C			
Chamber volume	5L	12L	22L	
Internal dimension WxDxH (mm)	280x130x150	305x150x240	505x150x330	
External dimension WxDxH (mm)	345x200x340	353x340x265	558x340x342	
Timer	1 - 5999min			
Net weight	5 Kg	12 Kg	18 Kg	19 Kg
Porous cover (lid)	2 - hole	4 - hole	6 - hole	
Alt Name	Water Bath			

## FEATURES

PID temperature controller, large LCD display screen and interface provides for user-friendly operation.

Easy to set Adjustable Timer. (1 minute to 5,999 minutes)

Built-in circulating water pump to ensure uniform upper and lower temperature of bath lotion.

Maintenance-free operation with easy to clean surface.

Both heater and bath chamber are made of corrosion-resistant stainless steel.

No angle in the bath chamber, easy to clean.

The standard stainless-steel bottom plate helps prevent direct contact by accessories and tubes to heating elements and sensors.

Drain valve makes emptying of bath water fast and easy for cleaning and moving.

Safety:

Preset On/Off function.

Built-in power interruption protection function, automatic run after power interruption.

Independent Over-temperature protection meets DIN 12880 International standard requirements.

Temperature deviation alarm.

Over current protection alarm.

Option:

Available RS-485 or USB ports for data collection.

## WATER BATH BGI1BM1 TO BGI1BM14

### CIRCULATING BATH

LCD Microprocessor Controller (with timing function)

Provided for precise and constant temperature and auxiliary heating in colleges industrial and mining enterprises and scientific research departments.



- Microprocessor temperature controller.
- Audible and visible alarm for temperature and water level.
- R134a refrigerant, imported compressor.
- With interface to external water bath.
- RS485 connector is option which can connect computer to record the parameters and the variations of temperature.(option)

Specification test condition

- Ambient temperature: 20°C
- Electrical requirements: 220V/50Hz
- Liquid medium: pure water

Note:

When setting temperature is above 80°C , liquid medium should be mineral oil.

## SPECIFICATIONS

Model	BGI1BM1	BGI1BM2	BGI1BM3	BGI1BM4	BGI1BM5
Old Model	BCLT-2801	BCLT-2802	BCLT-2803	BCLT-2804	BCLT-2805
Temperature Range	RT+5~100°C				
Precision	±0.1			±0.2	
Interior Dimension	150x160x150	240x170x150	330x300x150	240x170x200	
Chamber volume	6.7L	10.9L	22.5L	14.5L	
Electrical Requirements	220V 50Hz				
Pump (flux)	8L/min				
Power Consumption	1050W				
Alt Name	Circulating Bath				

Model	BGI1BM6	BGI1BM7	BGI1BM8	BGI1BM9	BGI1BM10
Old Model	BCLT-2806	BCLT-2807	BCLT-2808	BCLT-2809	BCLT-2810
Temperature Range	-10~100°C	-20~100°C	-30~100°C	-40~100°C	-50~100°C
Precision	±0.2				
Interior Dimension	150x160x150				
Chamber volume	4.5L				
Electrical Requirements	220V 50Hz				
Pump (flux)	8L/min				
Power Consumption	2300W		2800W	3150W	3100W
Alt Name	Circulating Bath				

Model	BGI1BM11	BGI1BM12	BGI1BM13	BGI1BM14
Old Model	BCLT-2811	BCLT-2812	BCLT-2813	BCLT-2814
Temperature Range	-10~100°C	-20~100°C	-40~100°C	-50~100°C
Precision	±0.2			
Interior Dimension	240x170x200			



Chamber volume	13L	
Electrical Requirements	220V 50Hz	
Pump (flux)	8L/min	
Power Consumption	2300W	3100W
Alt Name	Circulating Bath	



## FEATURES

- Microprocessor temperature controller.
- Audible and visible alarm for temperature and water level.
- R134a refrigerant, imported compressor.
- With interface to external water bath.
- RS485 connector is option which can connect computer to record the parameters and the variations of temperature.(option)

### Specification test condition

- Ambient temperature: 20°C
- Electrical requirements: 220V/50Hz
- Liquid medium: pure water

### Note:

When setting temperature is above 80°C , liquid medium should be mineral oil.

When setting temperature is below 5°C , liquid medium should be antifreeze (Absolute alcohol or absolute glycol)

Ambient temperature: +5~35°C

Option: Max. temperature 150°C



**Biolab Scientific Ltd.**

Trillium Executive Center, East Tower, 675 Cochrane Dr, Markham, Ontario L3R 0B8, Canada

Email: [info@biolabscientific.com](mailto:info@biolabscientific.com) | Website: [www.biolabscientific.com](http://www.biolabscientific.com)